

The image shows a close-up of a carpet with a complex, repeating geometric pattern. The pattern consists of interlocking shapes in shades of brown, tan, and teal, set against a light-colored background. A rectangular metal plaque is mounted in the center of the carpet. The plaque has a brushed metal finish and is secured by four screws at its corners. The text on the plaque is embossed and reads "GEOMETRY" on the top line and "AZCO" on the bottom line.

GEOMETRY  
AZCO





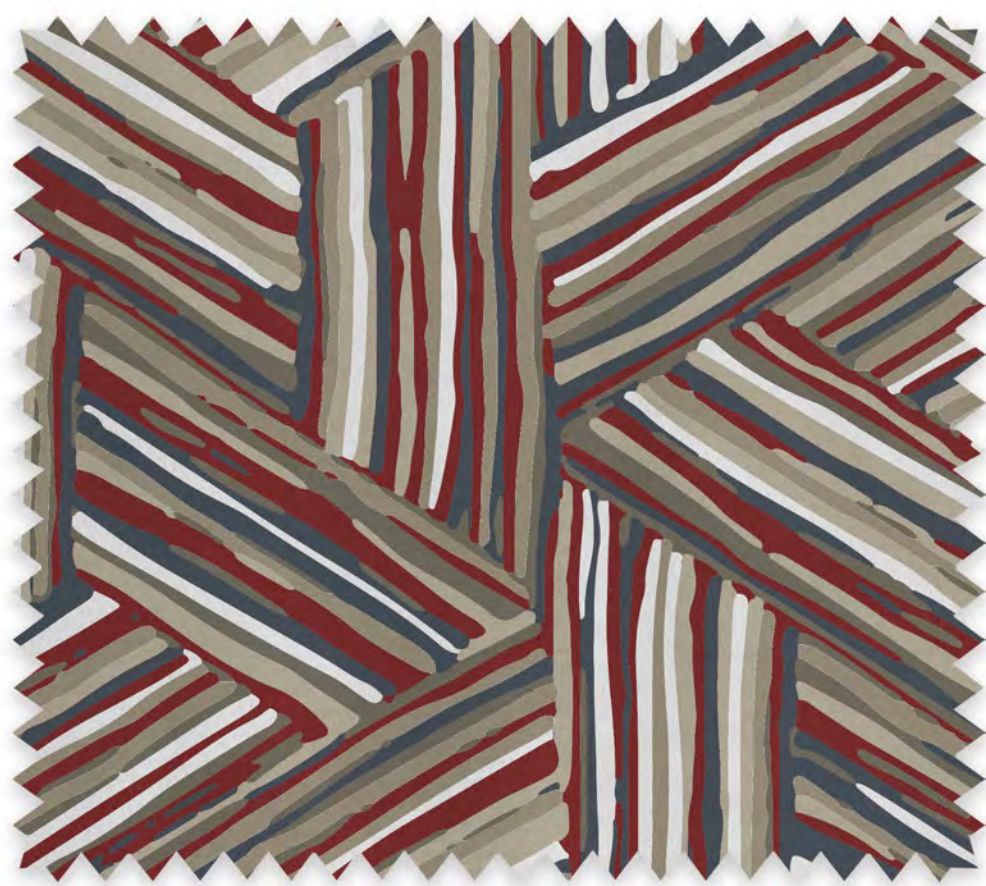
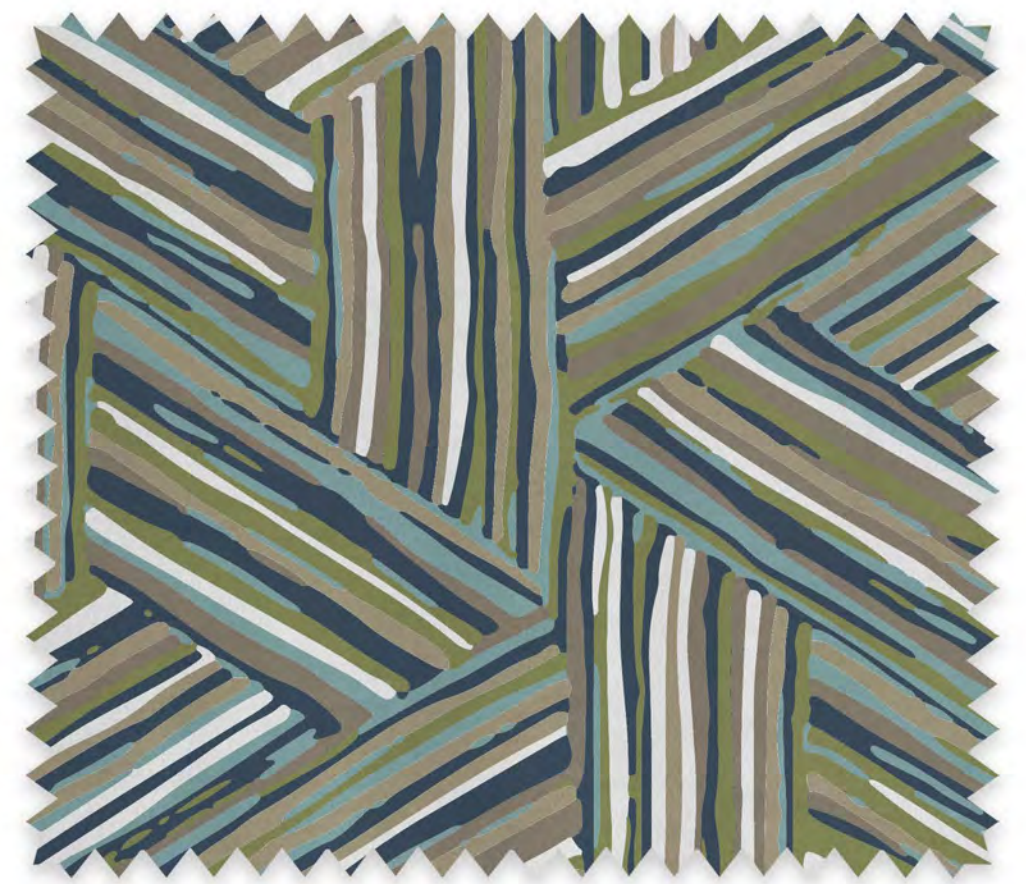
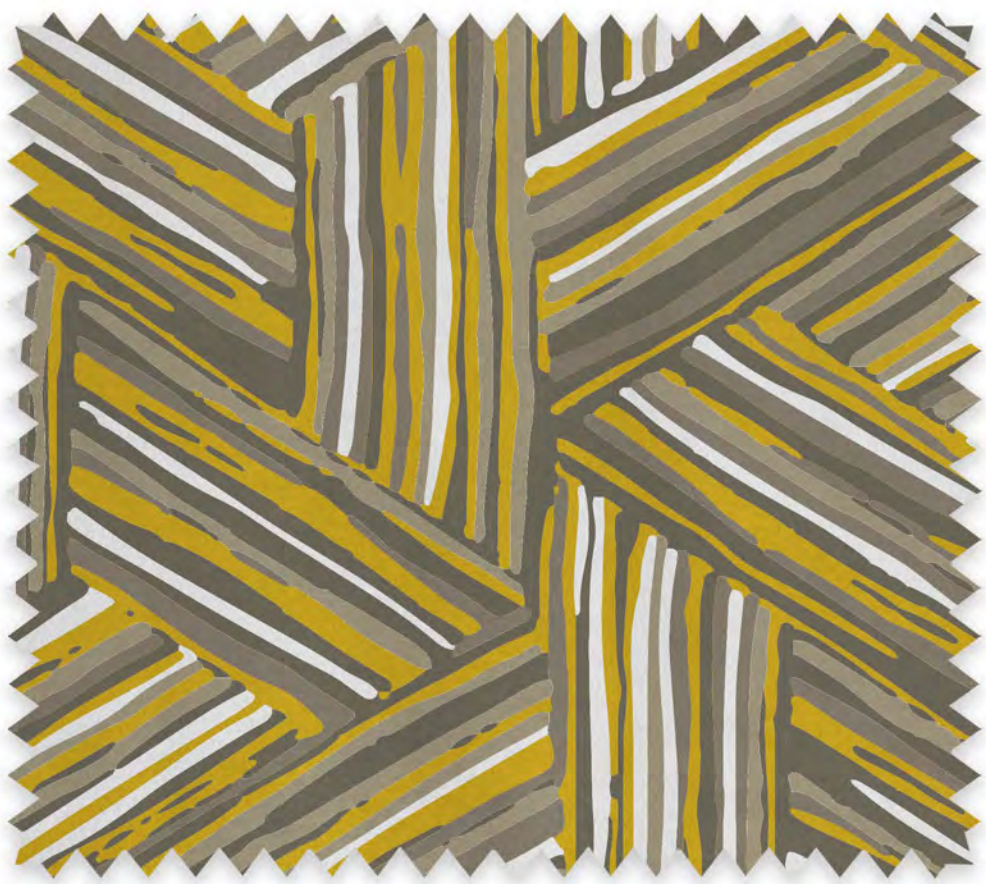
AZCO







AZCO







AZCO









AZCO







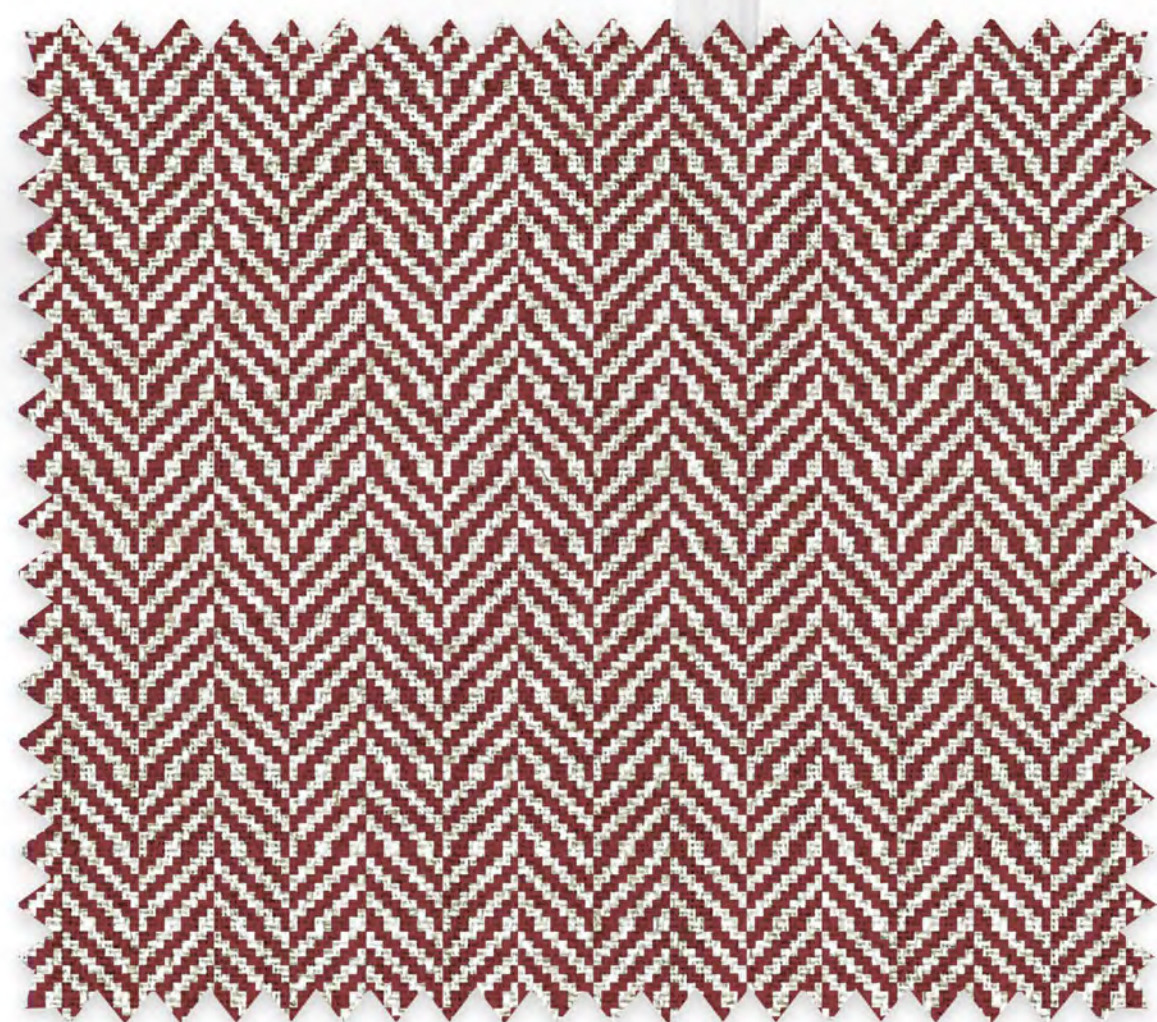


AZCO



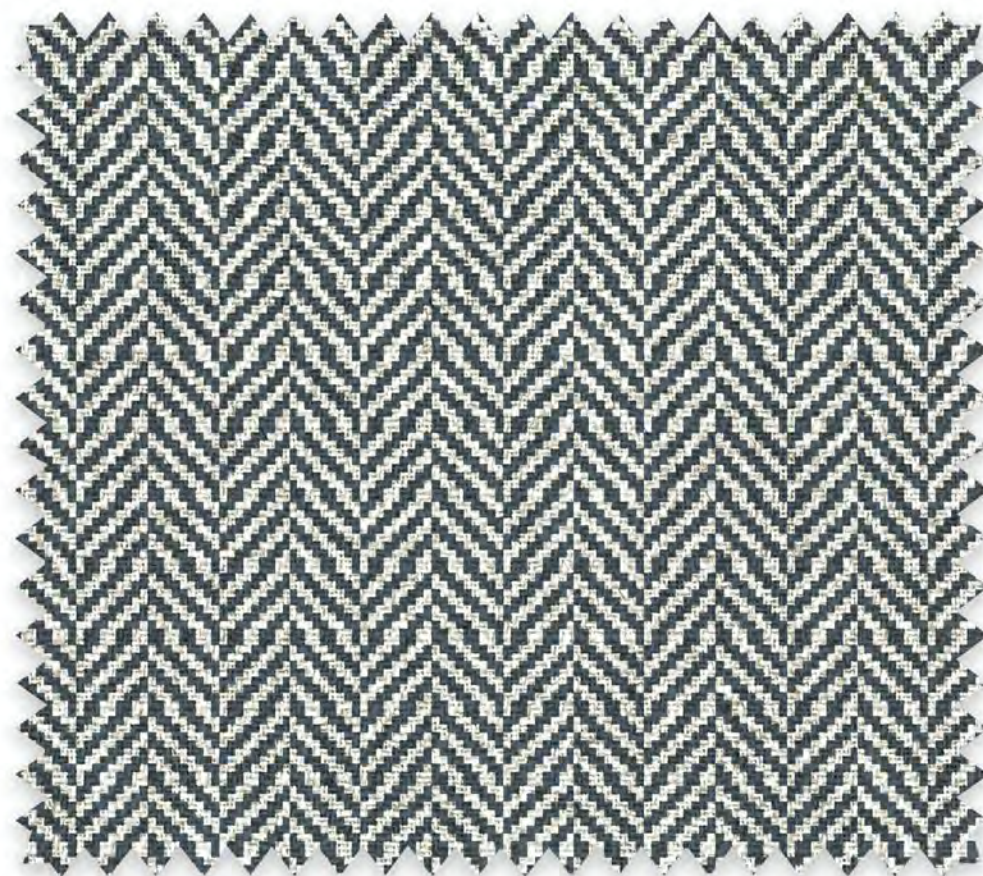
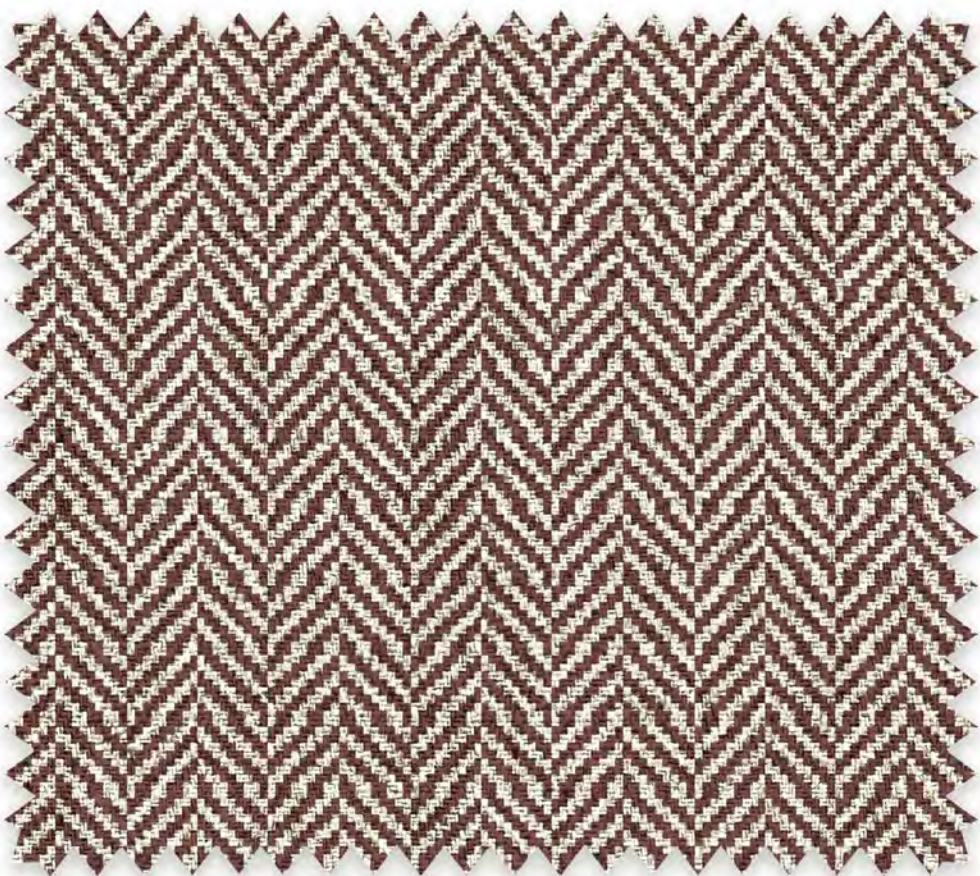
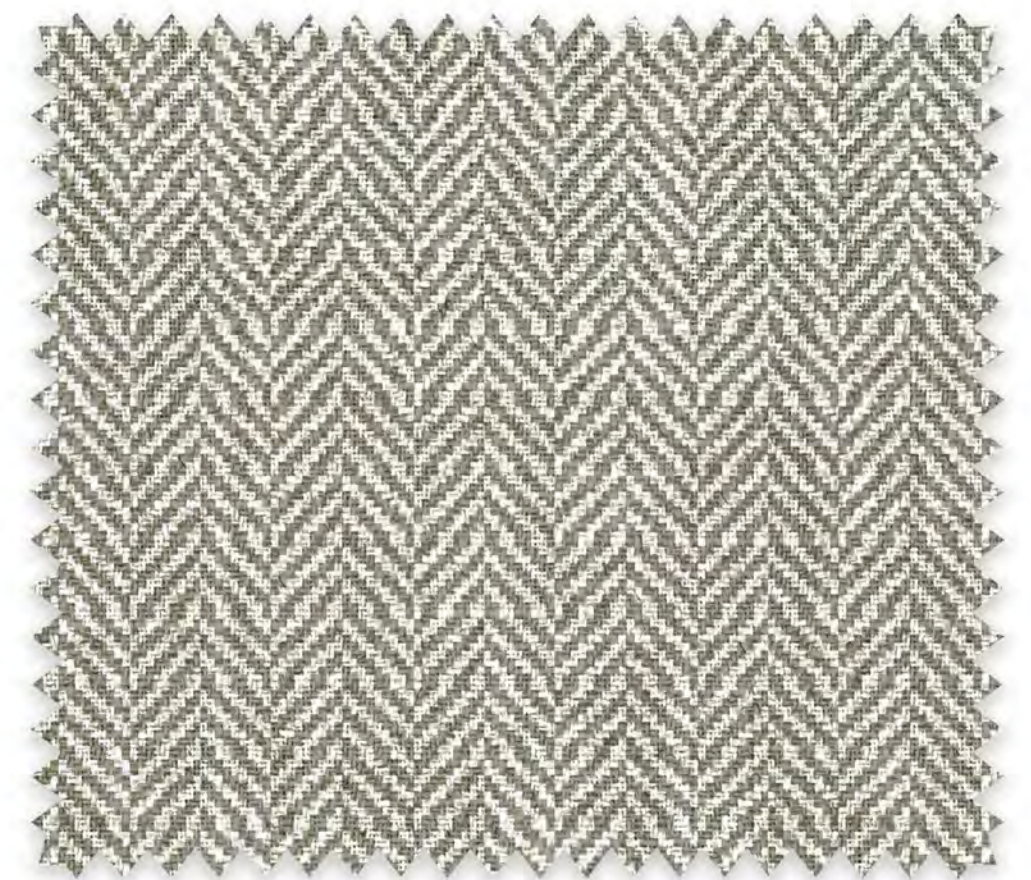
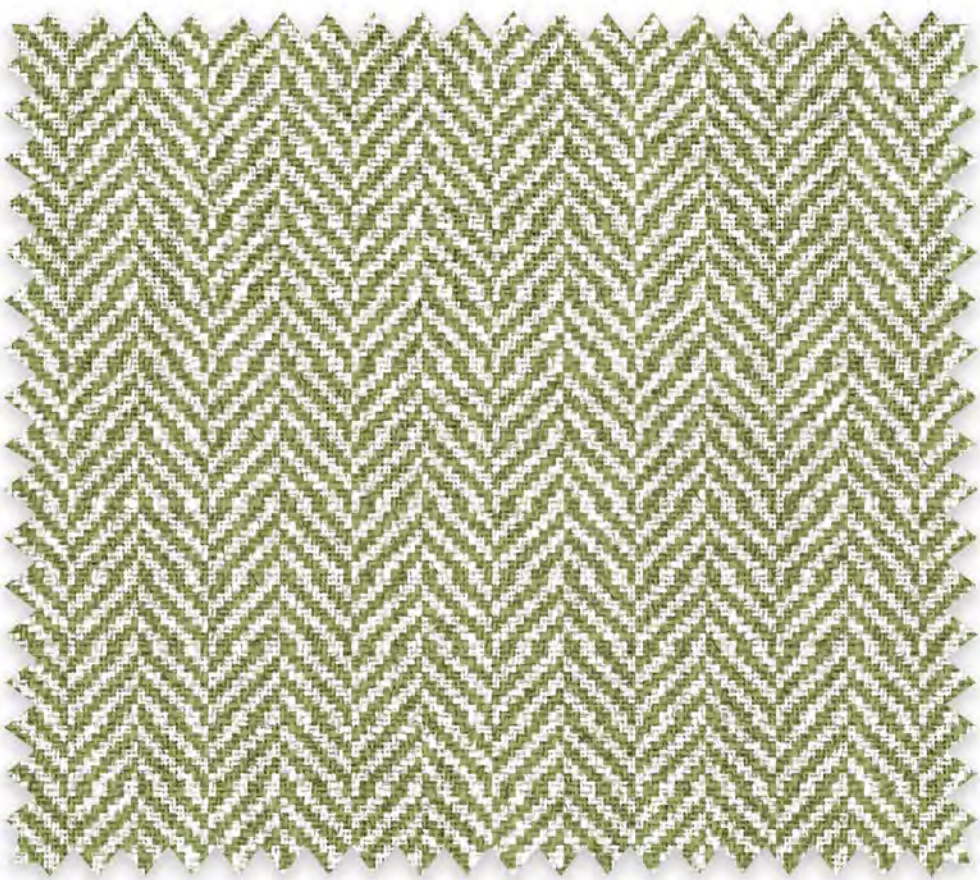








AZCO





## DISCLAIMER

ALL FABRIC COLORS IN THIS E-CATALOG ARE DIGITALLY MATCHED.  
DUE TO DIFFERENCES IN THE SCREEN RESOLUTION, THE ACTUAL  
FABRIC MAY VARY WITH THE DIGITAL FABRIC SWATCH AND IMAGES.  
THE BUYER MUST REFER TO THE PHYSICAL CATALOG BEFORE  
MAKING THE FINAL PURCHASE.

THE DESIGN SCALE MAY OR MAY NOT BE ACCURATE.

NO CLAIMS WILL BE ENTRAINED, FOR MATCHING THE ACTUAL FABRIC  
TO THE DIGITAL FABRIC SWATCH / IMAGE.

ALL IMAGES OF FABRICS AND RENDERED IMAGES ARE  
A PROPERTY OF AZCO. ANY USE OF THESE IMAGES WITHOUT  
DUE PERMISSION OF AZCO MANAGEMENT IS PROHIBITED.

DISTRIBUTION OF THE IMAGES IN THIS DIGITAL ECATALOG OR THE ECATALOG ITSELF  
IS MEANT ONLY FOR AZCO PRODUCT MARKETING BY AN AUTHORIZED DEALER.