



Luxury Home Textiles

# Spectra

[www.vayahome.com](http://www.vayahome.com)  
[sales@vayahome.com](mailto:sales@vayahome.com)





Spectra is a collection of digital prints that revels in colour. Bright and bold, muted and soothing, in fine lines and large bursts — the designs in Spectra champion the natural beauty of the world through a vivid lens.



**Above — Curtain** Indra Peyote **Right — Arm chair** Shikara Allure,  
Magnolia Sand Shell



**Sofa** Kinabalu Amber Green, **Curtain** Arita Flamingo



**Above** — **Curtain** Magnolia Russet Brown **Top left** — Canopy Bronze Mist  
**Bottom left** — **Curtain** Magnolia Sand Shell



**Blinds and Cushions** Arcadia Lilac, **Bed spread** Indra Peyote



**Above** — **Curtain** Arcadia Pale Peach **Right** — **Chair** Kinabalu Amber Green,  
**Foot stool** Indra Pelican



**Curtain** Shikara Blazing Orange,  
**Cushions** Hana Ensign Blue





Above — Curtain Indra Pewter Top right — Azalea Sand Bottom right — Hana Birch



**Curtain** Hana Ensign Blue, **Sofa bottom** Canopy Spray Green



**Above** — Indra Pelican **Top right** — Canopy Thistle **Bottom right** — Kinabalu Castle Wall



**Above** — Canopy Skipper Blue **Right** — Curtain Azalea Indigo



Hana Birch



Hana Ensign Blue



Hana Pale Gold

**Hana**

The watercolor-like effect of Hana gives this print a subtle complexity and a depth that invites you in to explore the picture it creates. Its muted shades make Hana an all-around fabric that would go beautifully with a variety of styles and colour schemes.

Composition: 30% Linen, 70% Viscose

End Use: Multipurpose



Kinabalu Amber Green



Kinabalu Castle Wall



Kinabalu Eucalyptus

**Kinabalu**

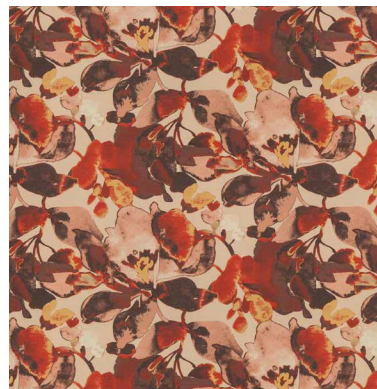
Kinabalu is the crisp air of the mountain, the kiss of filtered sunlight, the intrigue of a misty morning. The teeming flowers and delicate butterflies give this print an almost ethereal quality.

Composition: 30% Linen, 70% Viscose

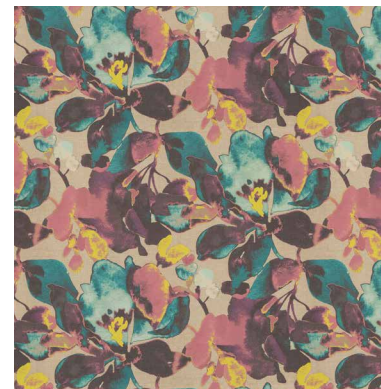
End Use: Multipurpose



Magnolia Fennel Seed



Magnolia Russet Brown



Magnolia Sand Shell

**Magnolia**

A bold print in stunning colours, Magnolia features large blossoms in rich colours with their petals unfurled on a plain background. This print makes for a gorgeous statement in any room.

Composition: 100% Cotton

End Use: Multipurpose



Arcadia Lilac



Arcadia Misted Yellow



Arcadia Pale Peach



Arcadia Steel Grey

**Arcadia**

A joyful print, Arcadia depicts a lush, bountiful garden of large and small blossoms – an idyllic utopia, a vision of harmony with nature.

Composition: 30% Linen, 70% Viscose

End Use: Multipurpose



Taisho Coral Haze



Taisho Cypress



Taisho Oasis

**Taisho**

Free-form and structure come together in Taisho, an incredibly detailed design with Japanese influences. Organic and geometric shapes, bold lines amongst fine strokes – Taisho embodies the spirit of achieving balance.

Composition: 100% Cotton

End Use: Multipurpose



Arita Flamingo



Arita Grey Violet

**Arita**

A medley of birds and carefully arranged flowers come gracefully together in Arita. This 100% cotton fabric, inspired by Japanese art and symbolism, comes in two soft colours that add a delicate vintage-charm to the print.

Composition: 100% Cotton

End Use: Multipurpose



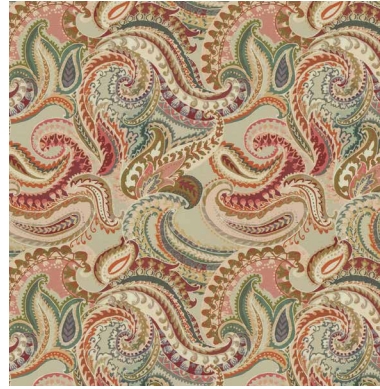
Shikara Allure



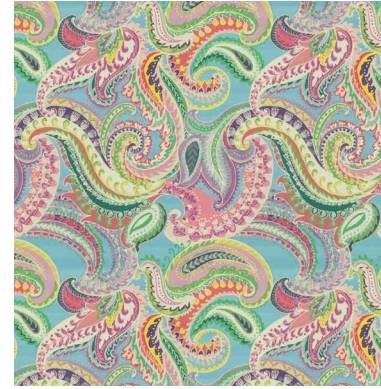
Shikara Blazing Orange



Shikara Jasmine Green



Shikara Pecan Brown



Shikara Raspberry Rose

**Shikara**

A riot of colours meets a twisting pattern of waves to create the mesmerizing Shikara. A lively, fun print, this fabric is available in 5 colours.

Composition: 100% Cotton

End Use: Multipurpose



Canopy Bronze Mist



Canopy Skipper Blue



Canopy Spray Green



Canopy Thistle

**Canopy**

Canopy perfectly captures the mood of being surrounded by lush palms. An invigorating design in soothing palettes, this jumbo print is versatile, and well suited for drapes and upholstery in any setting.

Composition: 100% Cotton

End Use: Multipurpose



Indra Irish Green



Indra Pelican



Indra Pewter



Indra Peyote

**Indra**

Indra features traditional Indian motifs, reinvented in a more contemporary style and a delightful array of hues. Bold designs in unusual colours, Indra is a blend of the best of old and new.

Composition: 100% Cotton

End Use: Multipurpose



Luxury Home Textiles

VAYA Home designs, curates and produces textiles for drapery and upholstery in a variety of fibres and tactile techniques.

Leveraging decades of textile designing and production expertise, the Jaipuria Mill in collaboration with international creatives, conceived the VAYA Home brand to weave thoughtfully constructed fabrics for interior decorators globally.

Combining hand crafted arts with machine exacted techniques unique to the mill, the VAYA collections aim to delight and surprise through the use of pattern, materials, and colours in their textiles.

Our products are sold through leading retailers as cut length yardage and are suitable for residential and commercial application.

[www.vayahome.com](http://www.vayahome.com)  
[sales@vayahome.com](mailto:sales@vayahome.com)