



Luxury Home Textiles

# Hudson Bay

[www.vayahome.com](http://www.vayahome.com)  
[sales@vayahome.com](mailto:sales@vayahome.com)







Hudson Bay is an extensive collection of luxurious textiles in deep indigo and rich hazelnut. Fine embroidery to broad swatches of colour, homey linens to sleek silk blends, the Hudson Bay collection has a range of fabrics of diverse styles and effects in a vibrant palette.





**Above** — Avani Indigo **Right** — **Curtain** Aurielle Indigo, **Chair** Quana Indigo, **Cushion** Asiman Indigo





**Above — Curtain** Alayna Indigo **Right —** Aarya Indigo





**Above** — Meliha Hazelnut **Top left** — Aerys Indigo **Bottom left** — **Curtain** Antalya Steel Grey





**Chairs** Auroville Hazelnut, **Curtains** Amara Hazelnut, Avani Hazelnut, **Sofa** Meliha Hazelnut, **Cushions** Meira Hazelnut, Asiman Hazelnut





**Above** — Auroville Hazelnut **Right** — **Fabrics** Aurielle Hazelnut, Antalya Hazelnut, Akira Hazelnut







**Above** — Alleppey Hazelnut **Right** — **Curtain** Avani Hazelnut, Asahi Hazelnut,  
**Sofa** Meliha Hazelnut, **Cushions** Meira Hazelnut, Asiman Hazelnut





Akira Hazelnut



Akira Indigo



Akira Steel Grey

**Akira**  
Akira encapsulates the bright surface of shimmering water. The combination of matte and shine give this fabric a mesmerizing effect.  
  
Composition: 33% Cotton, 67% Polyester  
End Use: Multipurpose



Amara Aquamarine



Amara Hazelnut

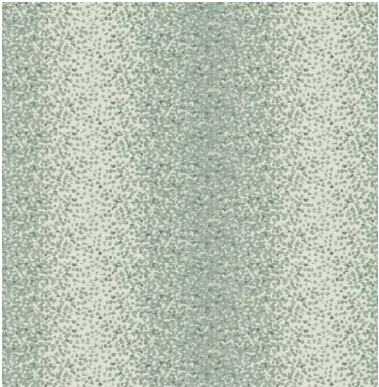


Amara Indigo

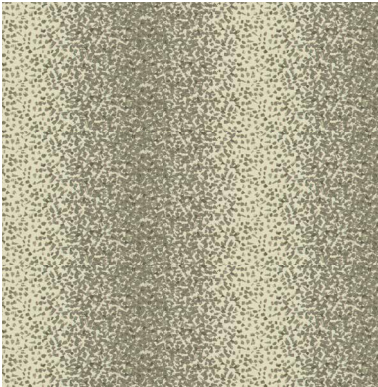
**Amara**  
The rich colours and simple shapes of Amara give it a refined elegance rivalled by few designs. The gently lustrous blocks, set against a matte background, create a perfect harmony of shape and hue.  
  
Composition: 16% Viscose, 84% Polyester  
End Use: Multipurpose



Antalya Hazelnut



Antalya Indigo



Antalya Steel Grey

**Antalya**  
A stippled, sweeping pattern that flows makes Antalya an ideal drapery fabric, adding a feeling of height to a room.  
  
Composition: 23% Viscose, 77% Polyester  
End Use: Multipurpose





Avani Aquamarine



Avani Hazelnut



Avani Indigo

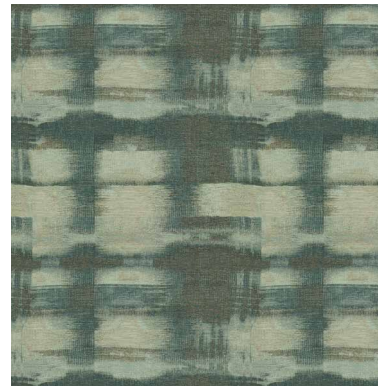
### Avani

The large leaves and flowers of Avani are intertwined with slender stems. The soft, hazy visual and tactile effect of the fabric give its floral design a muted and vaguely misty look.

Composition: 45% Viscose, 55% Polyester  
End Use: Multipurpose



Aarya Hazelnut



Aarya Indigo

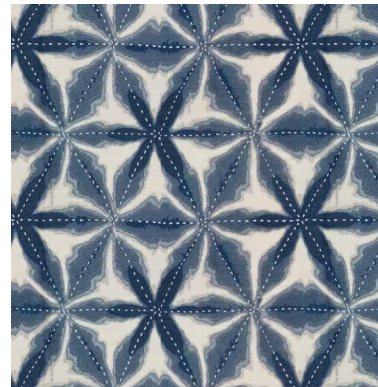
### Aarya

Aarya, a durable textile with a soft feel, embodies a broad brushstroke effect. Free flowing yet structured, it adds depth and character to a space.

Composition: 39% Viscose, 61% Polyester  
End Use: Multipurpose



Aerys Aquamarine



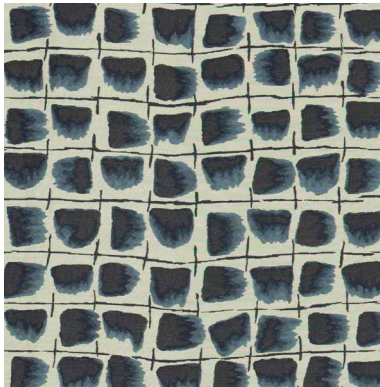
Aerys Indigo

### Aerys

Waves ripple across Aerys with a symmetry that is both pleasing to the eye and calming to the mind. Neat stitches traverse the textile, making the pattern one that is open and contributes a largeness to the space it occupies.

Composition: 14% Viscose, 40% Cotton, 46% Polyester  
End Use: Multipurpose





Aarjavam Indigo

**Aarjavam**

Every element within the pattern of Aarjavam is unique. Simplicity redefined, Aarjavam’s immaculate aesthetic is graceful and meticulous.

Composition: 22% Viscose, 33% Polyester, 45% Cotton  
End Use: Multipurpose



Asiman Hazelnut

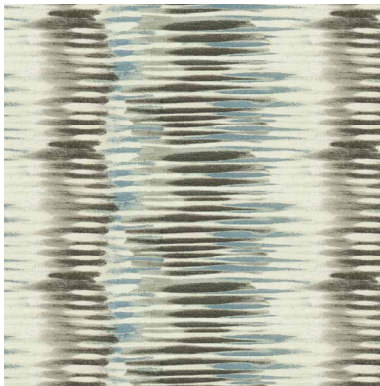


Asiman Indigo

**Asiman**

Asiman’s weave almost appears to have a soothing cadence; the design ripples out in perfect symmetry, creating a natural undulating pattern.

Composition: 48% Viscose, 52% Polyester  
End Use: Multipurpose



Alayna Indigo

**Alayna**

Greys and blues meld together in soft strokes in Alayna, tasteful multipurpose textile.

Composition: 22% Cotton, 27% Polyester, 51% Viscose  
End Use: Multipurpose



Aurielle Hazelnut



Aurielle Indigo

**Aurielle**

Aurielle comes together in an exciting medley of pattern, creating an intricately layered landscape. Where Aurielle in indigo is striking in terms of detail, Aurielle in hazelnut revels in a warm, alluring subtlety.

Composition: 41% Polyester, 59% Cotton  
End Use: Multipurpose



Alleppey Hazelnut

**Alleppey**

A shrunk yarn effect created by the strategic joining of two layers of fabric give Alleppey a distinct look and feel. Short tri-coloured strokes moving in different directions dot the fabric, giving it a sense of movement.

Composition: 17% Viscose, 35% Cotton, 48% Polyester  
End Use: Multipurpose



Johanna Hazelnut



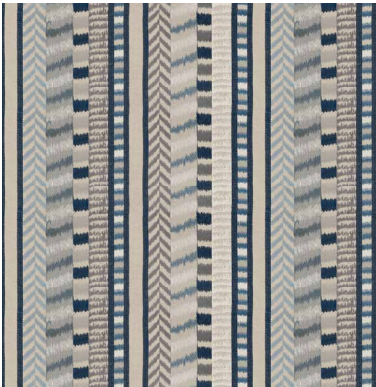
Johanna Indigo

**Johanna**

Johanna is made up of an array of geometric designs within a quatrefoil lattice pattern. The almost tiled-look lends this robust, heavy duty fabric depth and character.

Composition: 17% Linen, 17% Viscose, 30% Polyester, 36% Cotton  
End Use: Multipurpose





Calissa Indigo

**Calissa**  
Vertical strokes embroidered within vertical stripes of varying width, Calissa is a dream in contemporary design. Exquisitely detailed and wonderfully structured, its rhythmic intricacy lends it an expansive air.

Composition: 17% Linen, 17% Viscose, 30% Polyester, 36% Cotton  
End Use: Multipurpose



Asahi Hazelnut

**Asahi**  
Cord embroidered jumbo motifs on a cotton-lined blend, Asahi is a statuesque drapery fabric.

Composition: 45% Cotton, 55% Linen  
End Use: Multipurpose



Clarinda Indigo

**Clarinda**  
Light and dark blue and white yarns are tightly woven together in Clarinda, a sturdy, multipurpose textile.

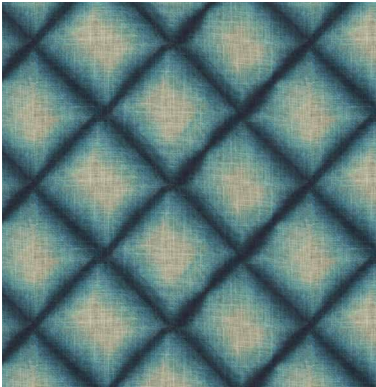
Composition: 41% Polyester, 59% Viscose  
End Use: Multipurpose



Auroville Hazelnut

**Auroville**  
Elegant, refined, with a touch of traditional styling, the minute metallic detailing against the more subtly yet finely patterned background make Auroville a thing of beauty.

Composition: 14% Viscose, 86% Polyester  
End Use: Multipurpose



Heidi Indigo

**Heidi**  
A vibrant, gorgeous blend of colours, Heidi is reminiscent of a modern tie-dye effect. The dark lines of black play against light blue in the body of a sheer, giving a stained-glass effect to the fabric.

Composition: 100% Polyester  
End Use: Multipurpose



Brenna Indigo

**Brenna**  
Bold meets delicate in Brenna. A breathtakingly gorgeous colour palette of shimmering blues takes up residence within a broad peacock feather frame, resulting in a unique ombre that captivates.

Composition: 24% Viscose, 76% Polyester  
End Use: Multipurpose





Savoy Hazelnut

#### Savoy

An exquisite sheer in a silk-cotton blend, the delicately motifs of Savoy have been embroidered in thread and zari. Flower motifs picked out in gold and silver, the leaves gracefully fanning out- Savoy is a luxurious and refined sheer.

Composition: 20% Silk, 80% Cotton  
End Use: Multipurpose



Meira Hazelnut

#### Meira

Wide columns of puff embroidered flowers and upward-reaching raised leaves on bleached linen make up Meira, a charming. earthy fabric with a quaintly rustic appeal.

Composition: 100% Linen  
End Use: Multipurpose

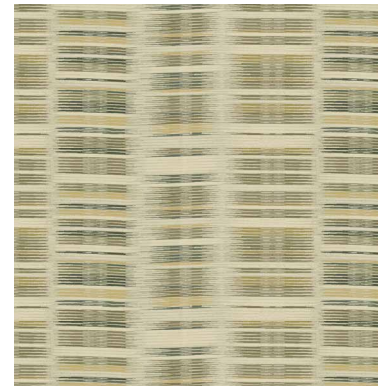


Valyrian Aquamarine

#### Valyrian

The sharp, fine lines of embroidery in a striking blend of colours make Valyrian an eye-catching multipurpose fabric.

Composition: 35% Viscose, 65% Linen  
End Use: Multipurpose



Meliha Hazelnut

#### Meliha

With thin strips of yellow, blue, green, cream, and ochre lined with gold, Meliha is a multicoloured jacquard fabric best suited for drapery.

Composition: 28% Cotton, 3% Viscose, 69% Polyester  
End Use: Multipurpose



Quana Indigo

#### Quana

Quana's open design and free form give it a grace and beauty typical of raw nature. An arresting design in grey and aqua, Quana is a fantasy brought to life.

Composition: 16% Polyester, 84% Viscose  
End Use: Multipurpose





Luxury Home Textiles

VAYA Home designs, curates and produces textiles for drapery and upholstery in a variety of fibres and tactile techniques.

Leveraging decades of textile designing and production expertise, the Jaipuria Mill in collaboration with international creatives, conceived the VAYA Home brand to weave thoughtfully constructed fabrics for interior decorators globally.

Combining hand crafted arts with machine exacted techniques unique to the mill, the VAYA collections aim to delight and surprise through the use of pattern, materials, and colours in their textiles.

Our products are sold through leading retailers as cut length yardage and are suitable for residential and commercial application.

[www.vayahome.com](http://www.vayahome.com)

[sales@vayahome.com](mailto:sales@vayahome.com)